

## **e Design Services (EDS)**

**Your Strategic Engineering Partner  
A Vision for Tomorrow**

The foundation of EDS enduring success is the unwavering stability and strategic direction established by our Managing Partner, V. Srinivas. His legacy is one of steadfast growth, operational excellence, and a deep commitment to client trust, providing the bedrock upon which our future is built.



Today, EDS is embarking on an ambitious new chapter with the launch of our dedicated 'Technology Group.' This division is driven by a forward-thinking vision, leveraging the transformative power of Artificial Intelligence (AI) and Auto-Tech to redefine industry benchmarks. We are transitioning from a traditional services provider to your Strategic Engineering Partner, fully equipped to navigate the complexities of modern innovation and deliver bespoke, high-impact technological solutions that ensure your sustained competitive advantage.

## **Our Core Verticals: Capability and Innovation**

**EDS specializes in delivering advanced engineering solutions across three mission-critical verticals:**

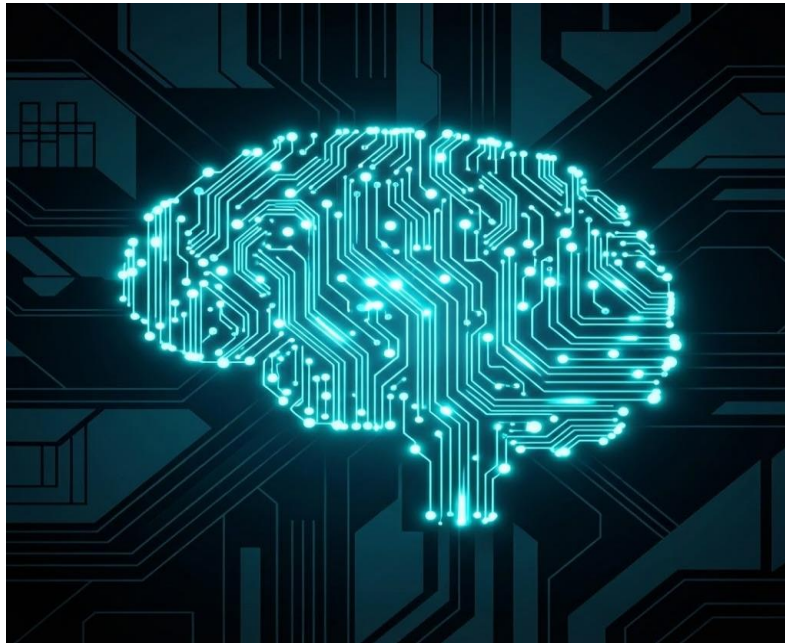
**Hyperscale Data Centers:** We deliver end-to-end design and engineering for mission-critical infrastructure, specializing in Tier IV power architecture and advanced cooling systems. Our capability ensures 99.995% uptime and unparalleled redundancy, pioneering innovation in sustainable energy integration and high-density computing environments.



**Auto-Tech R&D:** We provide comprehensive mechatronics design, simulation, and fabrication of specialized Test Rigs and R&D platforms for the automotive sector. Our capability accelerates the product development lifecycle by offering high-fidelity, real-world testing environments, driving innovation in autonomous vehicle sensor validation and electric powertrain performance testing.



**FieldBridge AI:** This proprietary technology suite translates complex, real-world site conditions into accurate, ready-to-use CAD models and estimation packages. Our capability dramatically reduces project lead times and errors by digitizing the site-to-design workflow, representing a leap in innovation for construction and infrastructure project planning and execution accuracy.



**Powered by Partnerships: Global Reach and Supply Chain Security**

EDS's strength is amplified through a robust ecosystem of strategic alliances and certifications, ensuring global reach, cutting-edge technology integration, and unparalleled supply chain security for our clients.

Category	Partner	Description
Automation	ABB	Authorized System Integrator for industrial and power automation solutions.
Energy	Schneider Electric	Authorized System Integrator for mission-critical power and cooling infrastructure.
Controls	Siemens	Authorized System Integrator for advanced control systems and digital factory solutions.
Assessment	AssessEdge	Sister company providing global facility assessment and validation services.

Strategic Alliance (AssessEdge LLP): As our sister company, AssessEdge LLP specializes in comprehensive facility assessment and validation. This partnership guarantees that every solution we deliver is rigorously tested and validated against the highest global standards, extending our operational reach into Global Assessment Infrastructure.



**Authorized System Integrators:** Our status as certified partners of the world's leading technology manufacturers (ABB, Schneider, Siemens) ensures access to original OEM support, training, and the most advanced product lines, guaranteeing the security and longevity of our deployments.

**Supply Chain Security:** Our close working relationships with OEMs like Siemens and Schneider Electric ensure priority access, certified training, and direct technical support. This OEM-level integration allows us to forecast, secure, and rapidly deploy critical components, effectively mitigating supply chain risks.



## **The EDS Standard: Operational Excellence**

Our commitment to operational excellence is codified in the SSSK V1.2 Risk Framework. This proprietary, 50-point audit system is integrated into every stage of project execution, from initial design to final commissioning.



The SSSK V1.2 framework leverages our deep domain expertise alongside the authorized integration standards of our partners to systematically identify, mitigate, and eliminate project risk. This rigorous, standardized process guarantees the highest level of quality, reliability, and compliance for all mission-critical infrastructure projects. Final Sign-off

### **Regulatory**

GST Registration

### **Technical**

Grade-A Electrical License: T-3462

### **Leadership**

V. Srinivas, Managing Partner

## **Project Compliance and Validation**

### **Registrations**

**GST Number: 36AACFE2000N1ZS**

**PAN: AACFE2000N**

### **Licensing**

**Grade-A Electrical License: T-3462**

## **Contact Details**

### **Address**

**H.No.6-3-349/14, Flat 303,  
Bala Maitri Nivas,  
Behind Saibaba Temple,  
Hindinagar, Panjagutta,  
Hyderabad — 500082, India**

### **Email**

**[connect@edesignservices.in](mailto:connect@edesignservices.in)  
[services.edesign@gmail.com](mailto:services.edesign@gmail.com)  
[edesign\\_services@yahoo.com](mailto:edesign_services@yahoo.com)**

### **Website**

**<https://edesignservices.in/>**

**Ready to Engineer Risk Out of Your Next Project? Contact us today to discuss how EDS can become your Strategic Engineering Partner.**